

S-5!®

The Right Way!

The right way to attach almost anything to metal roofs!

Installation Instructions

S-5!® Warning! Please use these products responsibly! Visit our website or contact your S-5! distributor for available load test results. The user and/or installer of these parts is responsible for all necessary engineering and design to ensure the CorruBracket™ 100T or 100T Mini has been properly spaced and configured. **Notice to S-5! users:** Due to the many variables involved with specific panel products, climates, snow melt phenomena, and job particulars, the manufacturer cannot and does not express any opinions as to the suitability of any S-5! assembly for any specific application and assumes no liability with respect thereto. S-5! products are tested for ultimate holding strength on various profile types and materials. This information is available from the S-5! website: www.S-5.com. This document is an installation guide only and the photographs and drawings herein are for the purpose of illustrating installation, tools and techniques, not system designs. Information contained within is intended to apply to the document as a whole.

CorruBracket 100T or 100T mini is mounted directly into the crest of the corrugation with the recommended sheet metal screws or bulb rivets, or can be mounted directly over and into the supporting structure of the roof, i.e. wood decking, wood or steel purlins, or trusses.

Tools Needed

- Screw Gun* or Bulb Rivet Gun
- String Line
- Rag
- Tape Measure

*For time saving tool recommendations contact S-5!

Use Proper Hardware

Only use appropriate screws and hardware when attaching this product to the roof sheeting or directly into the supporting structure.

Sheeting Only



Rivet Specifications: 9/32" (7.7mm) Diameter - Alu/Alu Flat Head Bulb-Tite Rivet with 5/8" (16mm) EPDM Washer
Grip: 0.032" - 0.375" / 0.8mm - 9.5mm



Check with your distributor for pricing and availability

Screw Specifications: 1/4" (6.3mm) Diameter - 1" (25mm) Length - Stainless Steel Self Tapping Screw with Hardened Steel Piercing Point - 5/16" (8mm) Hex Head - 5/8" (16mm) Stainless Steel / EPDM Sealing Washer

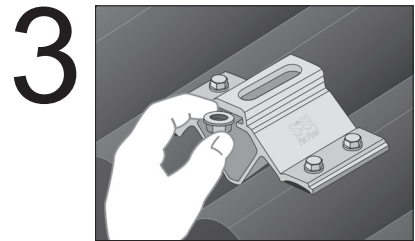
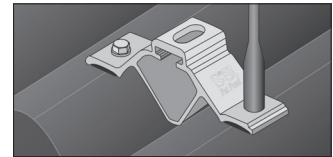
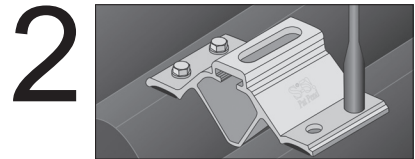
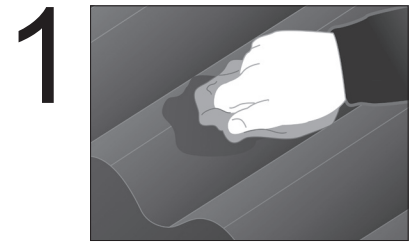
Supporting Structure



Metal to Metal Screw Specifications: 12-14 Self Drilling Screw - 2" Length - 3/8" Hex Washer Head - Zinc/Aluminum Cap



Metal to Wood Screw Specifications: 1/4-14 Type 17-AB Milled Point - 2-1/2" Length - 3/8" Hex Washer Head - Zinc/Aluminum Cap



Step 2-b shows the CorruBracket™ 100T Mini

To Install CorruBracket™ 100T or CorruBracket™ 100T Mini

A) Attaching to roof sheeting

1. The only surface preparation necessary is to simply wipe away excess oil and debris.
2. Secure the CorruBracket™ 100T or CorruBracket™ 100T Mini directly into the crown of the roof profile with the recommended screws via the pre-punched holes, or by pre-drilling the proper-sized hole in the sheeting through the pre-punched holes and riveting with bulb-type rivets (as per rivet manufacturers installation instructions). To achieve tested holding strength, secure the CorruBracket 100T or CorruBracket 100T Mini by using all of the pre-punched hole locations. Drive fasteners until washers are adequately seated and sealed.

Note: Do not over-drive fasteners; a slight extrusion of rubber around the washer is a good visual-tightness check. If a fastener has been stripped due to over-driving, it is important to remove the fastener and replace it with a bulb rivet or larger diameter fastener. To avoid stripping, use screw gun with depth-sensing nose piece or adjustable torque clutch.

3. From either end of the CorruBracket 100T or CorruBracket 100T Mini, slide the included M8-1.25 hex flange nut (flange side up) into the top groove. The CorruBracket 100T and CorruBracket 100T Mini are now ready to install the S-5-PV Kit by insertion of the the PV stud, or other ancillaries by using a standard M8 bolt through the slotted top thru-hole and the previously inserted hex flange nut. For critical attachment applications utilizing an M8-1.25 X 16 mm Hex Flange Bolt, tighten the M8 bolt to 160 inch pounds (13 foot pounds).

These instructions are for use by those experienced in the trade. Always follow appropriate safety precautions and use appropriate tools.

CorruBracket™ 100T and CorruBracket™ 100T Mini Installation Instructions

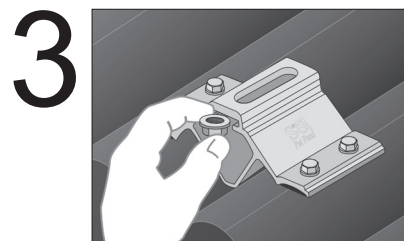
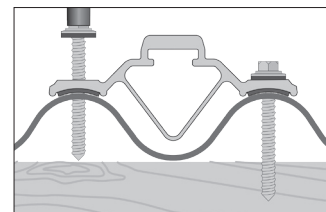
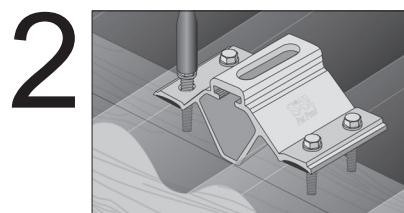
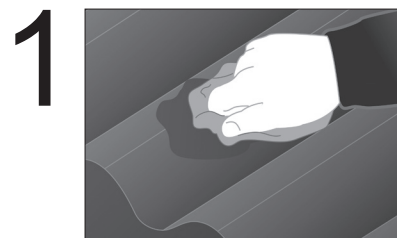
To Install CorruBracket™ 100T or CorruBracket™ 100T Mini

B) Attaching to supporting structure

1. Determine the location of the supporting structure of the roof. When possible secure the CorruBracket™ 100T using all of the pre-punched hole locations; when not possible, always use the two upslope hole locations. Always secure CorruBracket 100T Mini using both hole locations. The only surface preparation necessary is to simply wipe away excess oil and debris.
2. Secure the CorruBracket 100T or CorruBracket 100T Mini by driving appropriate screws through the pre-punched holes and into the supporting structure of the roof. Do not remove the EPDM rubber gasket as this is for weather-proofing.

Note: Do not over-drive fasteners; a slight extrusion of rubber around the washer is a good visual-tightness check.

3. From either end of the CorruBracket 100T or CorruBracket 100T Mini, slide the included M8-1.25 hex flange nut (flange side up) into the top groove. The CorruBracket 100T and CorruBracket 100T Mini are now ready to install the S-5-PV Kit by insertion of the PV stud, or other ancillaries by using a standard M8 bolt through the slotted top thru-hole and the previously inserted hex flange nut. For critical attachment applications utilizing an M8-1.25 X 16 mm Hex Flange Bolt, tighten the M8 bolt to 160 inch pounds (13 foot pounds).



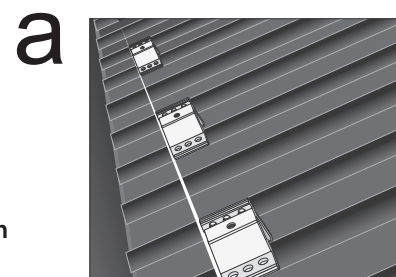
CorruBracket™ 100T Placement Tips

a) Horizontal bracket alignment

To ensure brackets are installed in a straight line when desired, install a single CorruBracket™ 100T on each end of the roof at a measured, consistent distance from the bottom edge of the roof. Use a string line between the two brackets. Mount the remaining CorruBracket™ 100T along the string line, directly into the roof.

b) Upslope bracket spacing

For upslope bracket spacing techniques reference the S-5! website at www.S-5.com



S-5!® Warning! Please use this product responsibly!

Products are protected by multiple U.S. and foreign patents. For published data regarding holding strength, fastener torque, patents, and trademarks, visit the S-5! website at www.S-5.com.
Copyright 2015, Metal Roof Innovations, Ltd. S-5! products are patent protected.
S-5! aggressively protects its patents, trademarks, and copyrights. Version 011515.
CB100T-V1.0-0915