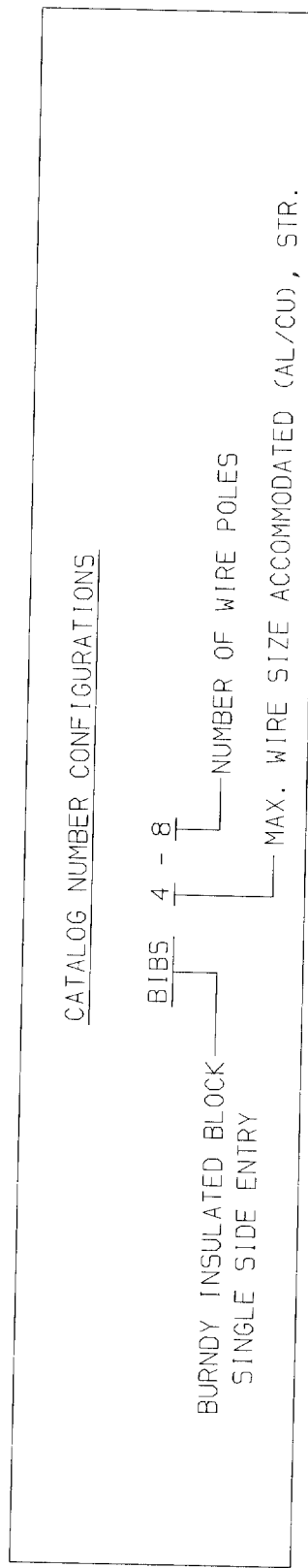
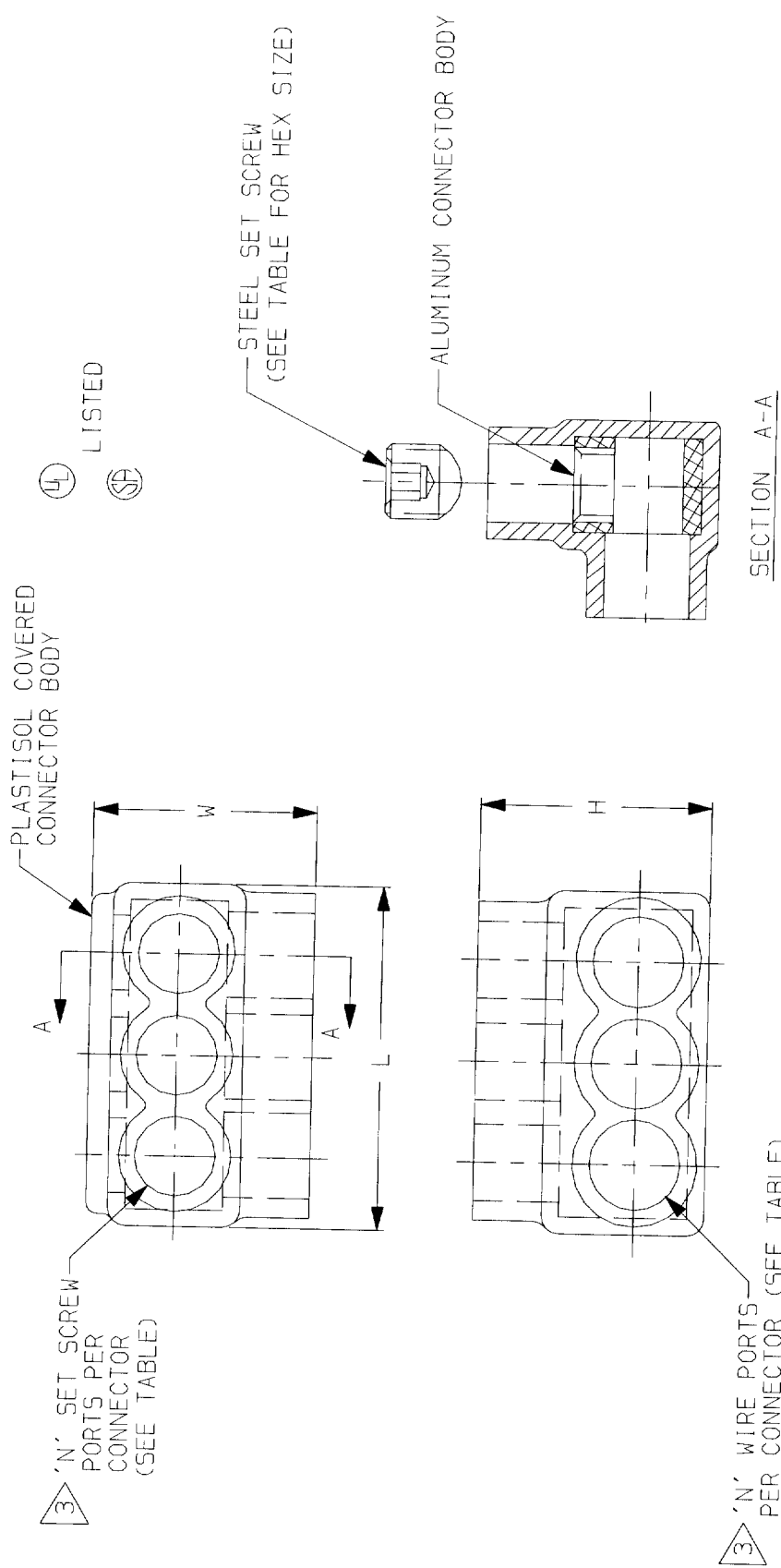


CATALOG NO.	WIRE RANGE (AWG/kcmil)	L	W	H	HEX KEY	N
BIBS4-3	#14-#4	1.51 [38]	1.25 [32]	1.25 [32]	1/8	3
BIBS4-4	#14-#4	1.95 [50]	1.25 [32]	1.25 [32]	1/8	4
BIBS4-5	#14-#4	2.39 [61]	1.25 [32]	1.25 [32]	1/8	5
BIBS4-6	#14-#4	2.83 [72]	1.25 [32]	1.25 [32]	1/8	6
BIBS4-8	#14-#4	3.71 [94]	1.25 [32]	1.25 [32]	1/8	8

FEATURES	BENEFITS
PLASTISOL COVERED AL6061-T6 BODY	SAVES TIME, LOWERS INSTALLATION COSTS, ELIMINATES TAPING.
CLEAR PLASTISOL OXIDE-INHIBITOR IS PRE-INSTALLED	ALLOWS VISUAL CONFIRMATION THAT CONDUCTOR IS PROPERLY INSERTED. INHIBITS MOISTURE AND CONTAMINANTS FROM ENTERING THE CONTACT AREA
RANGE-TAKING	REDUCES THE NUMBER OF CONNECTORS CARRIED IN INVENTORY

REV.	DATE	DESCRIPTION	BY	C.K'D.
0	11/4/99	ADDED SHEET 10 OF 15, DRAWING RELEASED	PL	RER
1	1/7/00	CHNG'D L DIM 1.59, 2.03, 2.47, 2.91 & 3.78 TO 1.51, 1.95, 2.39, 2.83 & 3.71 (PFR ECO 5370)	PL	KH



**NOTES:**

- THIS DRAWING TO BE INTERPRETED PER ANSI Y14.5M.
- CONNECTORS ARE SUPPLIED INDIVIDUALLY LABELED. LABEL INFORMATION INCLUDES CATALOG NUMBER, QUANTITY, AND BARCODE.
- END CAPS INSTALLED ON WIRE PORTS AND SET SCREW PORTS.
- ALL CONNECTORS UL LISTED, CSA CERTIFIED FOR ALSCU, 90°C APPLICATIONS.
- DIMENSIONS IN BRACKETS [ ] ARE IN MILLIMETERS ROUNDED OFF TO THE NEAREST MILLIMETER, UNLESS OTHERWISE NOTED, AND ARE FOR REFERENCE ONLY.

**UNITAP™ - PLASTISOL COVERED WIRE CONNECTORS**

CAT NO: **BIBS4-** SERIES SCALE: NTS  
 DRAWN: P LAPONIUS 11/4/99 CHECKED: R ROBICHEAU 11/4/99  
 DSGN APPVL: G DITROJA 11/4/99 MFG APPVL: N/A  
 Q.A. APPVL: J BRODEUR 11/4/99 MKTG APPVL: R ROBICHEAU 11/4/99  
 CAD FILE: SC210991-10-1 PM REF: N/A  
 MDL REF: N/A  
 PROJECT: ECO 5274  
 DRAWING NO. **SC210991** REV  
 FRAMATOME CONNECTORS USA INC.  
 BURNDY ELECTRICAL  
 MANCHESTER, NH 03108  
 U. S. A.  
**FCI** 1-800-346-4175  
 SHEET 10 OF 15